

envirovent®

ECO DMEV+  
USER GUIDE FOR RESIDENT



# HOME VENTILATION SYSTEM GUIDE

## ECO DMEV+

### Decentralised Mechanical Extract Ventilation

#### What is it and why is it there?

The Eco dMEV+ is a decentralised mechanical extract ventilation unit. The fan is found in wet rooms which include a kitchen, bathroom and WC, and continuously extract stale, moist air out to the atmosphere. The fans, as well as the removal of moist air, assist with ensuring that good indoor air quality is maintained through the dwelling by providing a low continuously controlled background ventilation rate.

#### How will it help?

It will prevent the build up of moisture in the wet rooms whilst restricting the migration of this moisture to other areas of the property. The Eco dMEV+ fan provides year-round, continuous extraction from the wet areas being served.

#### How do I control it?

The system operates continuously 24 hours a day at a low rate known as 'trickle', to ensure your home is ventilated at the appropriate level. You can send the system into a higher rate called 'boost' in a number of ways to rapidly remove excess moisture or odours.

The models available include standard, timer, humidistat and pullcord fans. These controls are physically on the fan itself, and there are no separate controls included for use with the fans. However, in the case of the timer and humidistat these should have been set by the installer of the system. It may also be that the fan has been set up to operate manually through an independent switch or control, such as a light switch.

When the units are installed, they will have been set up based upon the nature of the property in terms of potential humidity levels, timers etc. the fans therefore should not require any further intervention unless these factors have changed.

Should you be unsure of the model of the fan, please consult the installation guide which contains diagrams which show all available models. If further assistance is required, please call EnviroVent on 01423 810 810.

#### Staying cool in hot weather

Public Health England cautions that prolonged periods of extremely hot weather pose serious health risks. For guidance about this, please consult the following website, which includes advice on protecting yourself and your dependents: <https://www.gov.uk/government/publications/heatwave-plan-for-england>

#### Annual Running Costs

This unit contains fans powered by electricity.

Please scan our QR code to see the annual running costs of this product.



Or visit: [envirovent.com/annual-running-costs](https://envirovent.com/annual-running-costs)

These calculations must be used as a guide only.

#### Warranty

The EnviroVent Eco dMEV+ fans are covered by a full 2-year warranty. You will find the terms of the warranty in the installation guide.

- **DO NOT** switch off the unit - The unit is set to run continuously 24 hours a day, 7 days a week.

## Maintenance

More detailed instructions for maintenance are included in the Installation Guide.

### Maintenance checks:

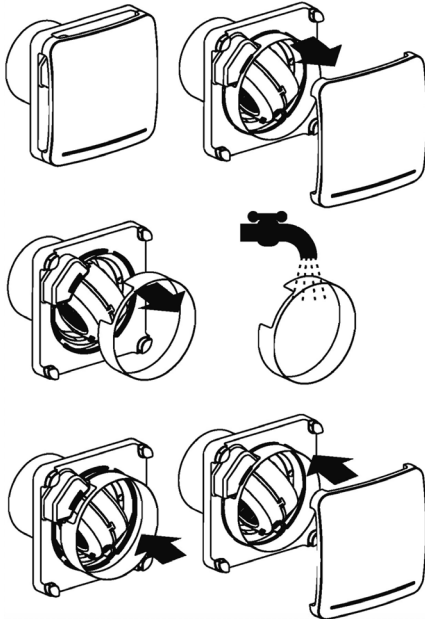
- Ensure that the fan is sufficiently clean and that the filter does not become blocked.

### Recommended maintenance schedule:

- Isolate the unit from the mains supply.
- Gently pull the front cover away from the unit.
- Remove the mesh filter. Add the renewed mesh circular filter, ensuring that the filter sits in the grooves made to hold it.
- Engage the mains supply.
- The filter should be checked periodically, the time period will vary depending upon the location of the fan being installed.

Call EnviroVent on 01423 810 810 - Filter part code are FILTER-KFEM (for HTP versions only) and FILTER-KFES.

Not maintaining the filters during the life of the product can invalidate the warranty.



## Service

The unit should be serviced every 2 years by EnviroVent, a maintenance company or other competent person. This would include filter checks and replacements, including airflows. Any worn-out components can then be replaced and old parts recycled where possible.

## Safety

You do not need to remove the main cover or any fixed components from the unit, any repair work should be carried out by a qualified person to avoid hazard. If the supply cord is damaged, it must be replaced by the manufacturer, service agent, or similarly qualified person.

**⚠ Emergency shutdown details - Unit to be isolated from the mains by turning it off at the isolating switch.**

# envirovent®

Leading Manufacturer & Supplier of  
Innovative & Sustainable Ventilation Systems

EnviroVent Ltd  
Harrogate West Business Park  
Unit 1 Bardner Bank  
Killinghall  
Harrogate  
HG3 2SP

T / 01423 810 810  
E / [info@envirovent.com](mailto:info@envirovent.com)  
W / [envirovent.com](http://envirovent.com)



For additional information,  
see the installation guide.

---

**E&OE | MKT ENV610 - V1 - 26.04.23**

Due to our policy of continuous innovation and improvement EnviroVent reserves the right to alter products specification and appearance without notice.

**We want to hear from you**

Your feedback is important to us as we strive to improve our products, services, and overall customer experience. Please email us to help us serve you better: [feedback@envirovent.com](mailto:feedback@envirovent.com)